

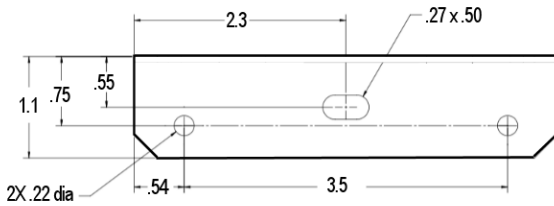


BBG-MB

BBG Mounting Bracket Installation Instructions

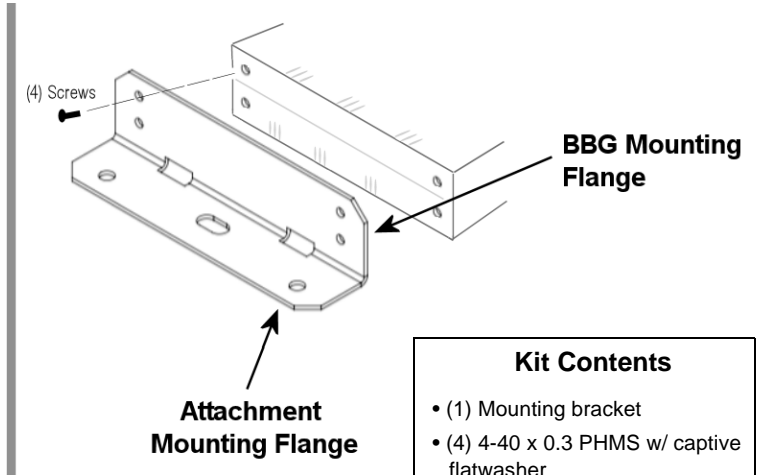
The **BBG-MB** Mounting Bracket allows most BBG™ throwdown compact units to be rigidly mounted to affixing surfaces. The instructions below show how to mount BBG using the bracket, as well as attaching dimension details.

BBG-MB Mechanical Details



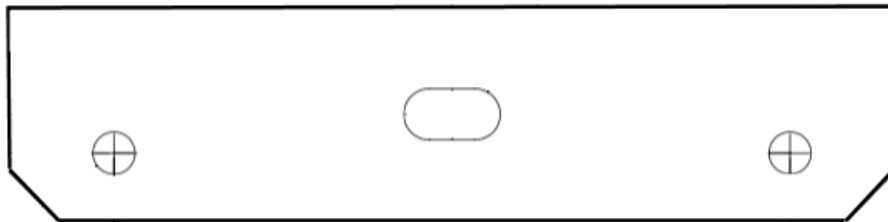
Mounting Flange Dimensions & Attachment Holes

Note: 3.5" mounting hole spacing aligns with vertical rail hole spacing on common racks.



Kit Contents

- (1) Mounting bracket
- (4) 4-40 x 0.3 PHMS w/ captive flatwasher



Surface Attachment Drilling Template

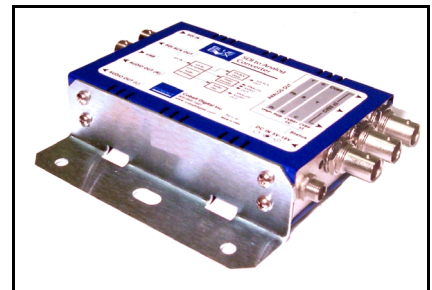


Make certain printer PDF scaling is set to **Actual Size** (no scaling) if using printed template.

1 If secure mounting to surface using screws is desired, note attachment details and dimensions shown above, determine mounting location and drill bracket mounting holes on surface.

2 Noting desired orientation of BBG unit with mounting bracket, remove four (4) flathead Phillips screws from desired side of BBG unit.

- Bracket can be affixed to either side of BBG unit, with top or bottom of BBG facing up or down as desired.
- Bracket can be oriented with mounting flange projecting from BBG, or mounting flange positioned underneath BBG as desired.



3 Align bracket BBG mounting flange holes with BBG screw holes (noting desired orientation) and start (but do not tighten) four (4) Phillips panhead screws provided (removed BBG flathead screws can be saved or discarded).

4 Tighten bracket-to-BBG screws, **tightening no more than 1/4-turn.**



Using screws other than supplied bracket-to-BBG mounting screws can damage BBG unit.

5 Secure mounting bracket, along with BBG unit, to surface using appropriate hardware using any of the three mounting flange holes.