

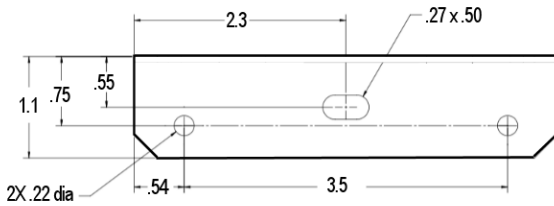


BBG-MB

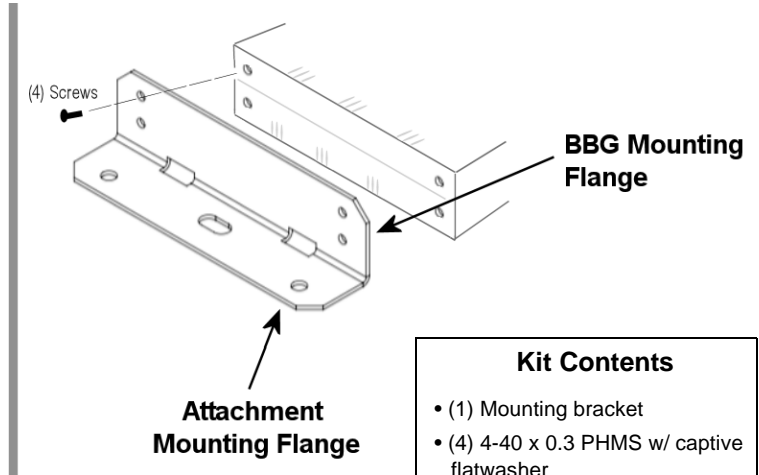
BBG Mounting Bracket Installation Instructions

The **BBG-MB** Mounting Bracket allows most BBG™ throwdown compact units to be rigidly mounted to affixing surfaces. The instructions below show how to mount BBG using the bracket, as well as attaching dimension details.

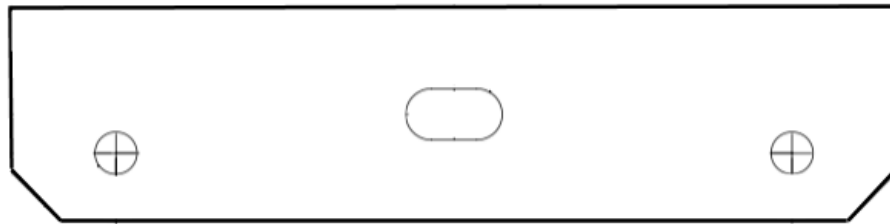
BBG-MB Mechanical Details




Mounting Flange Dimensions & Attachment Holes



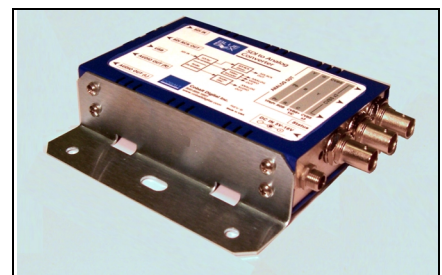
- Kit Contents**
- (1) Mounting bracket
 - (4) 4-40 x 0.3 PHMS w/ captive flatwasher




Surface Attachment Drilling Template

 Make certain printer PDF scaling is set to **Actual Size** (no scaling) if using printed template.

- 1 If secure mounting to surface using screws is desired, note attachment details and dimensions shown above, determine mounting location and drill bracket mounting holes on surface.
- 2 Noting desired orientation of BBG unit with mounting bracket, remove four (4) flathead Phillips screws from desired side of BBG unit.
 - Bracket can be affixed to either side of BBG unit, with top or bottom of BBG facing up or down as desired.
 - Bracket can be oriented with mounting flange projecting from BBG, or mounting flange positioned underneath BBG as desired.
- 3 Align bracket BBG mounting flange holes with BBG screw holes (noting desired orientation) and start (but do not tighten) four (4) Phillips panhead screws provided (removed BBG flathead screws can be saved or discarded).



- 4 Tighten bracket-to-BBG screws, **tightening no more than 1/4-turn.**
- 5 Secure mounting bracket, along with BBG unit, to surface using appropriate hardware using any of the three mounting flange holes.

 Using screws other than supplied bracket-to-BBG mounting screws can damage BBG unit.