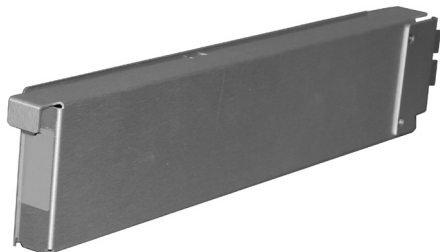


## 9490CWDM » MULTI-CHANNEL FIBER OPTICAL MULTIPLEXERS AND DE-MULTIPLEXERS



The 9490 series of CWDM passive multiplexers (mux) and de-multiplexers (demux) offer a flexible, cost-effective solution to mux and demux up to eight fiber channels onto a shared fiber trunk. Used in conjunction with our fiber EO and OE converter cards, digital video, audio, and IP can all be carried over a shared fiber trunk. Coarse Wave Division Multiplexing (CWDM) offers a cost-effective, scalable, and convenient solution for multiplexing and de-multiplexing discrete channels onto a shared fiber trunk.

The 9490CWDM mux units and companion de-mux units are available in 4 and 8-channel versions. Both 8 and 4-channel versions are available with expansion ports that allow additional passive mux/demux units to be daisy-chained on to the shared fiber trunk. The passive devices use no frame power and are fully functional regardless of frame power or communication status. Each device occupies 2 frame slots.

### » FEATURES

Modular, scalable design allows expansion from 4 to 16 wavelengths (channels)

Bi-directional operation

Fully passive design using low-loss filters. Requires no frame power or communications.

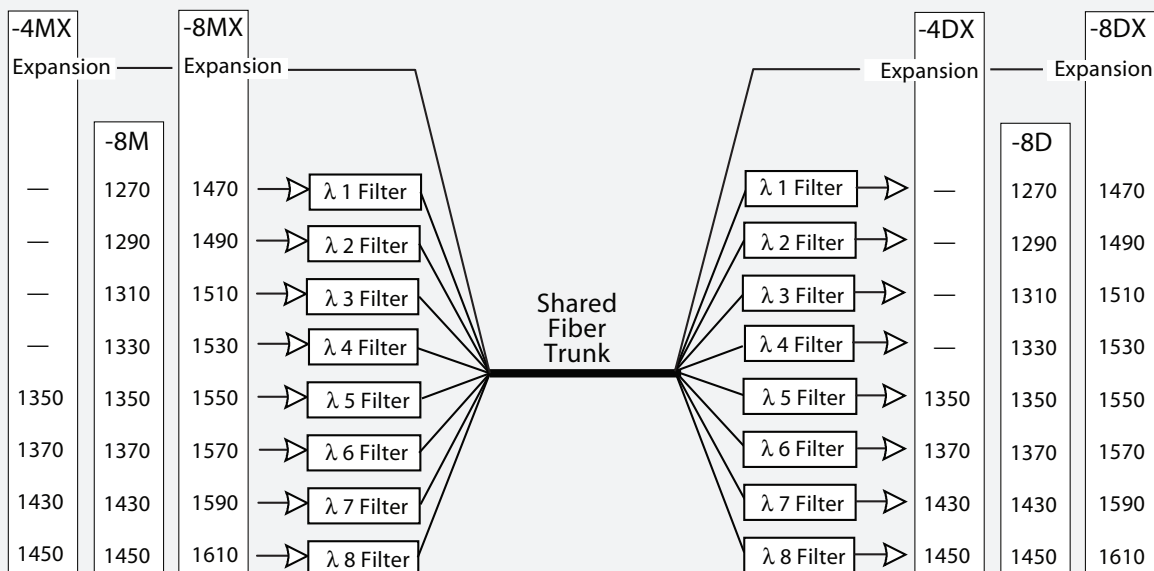
Supports single-mode fiber

Fits 20-slot openGear frames using blindmate-connection rear I/O modules

Five year warranty

9490CWDM Mux

9490CWDM De-Mux



**9490CWDM-8MX** 8-channel mux w/ expansion port  
**9490CWDM-8M** 8-channel mux  
**9490CWDM-4MX** 4-channel mux w/ expansion port

**9490CWDM-8DX** 8-channel demux w/ expansion port  
**9490CWDM-8D** 8-channel demux  
**9490CWDM-4DX** 4-channel demux w/ expansion port

# 9490CWDM » MULTI-CHANNEL FIBER OPTICAL MULTIPLEXERS AND DE-MULTIPLEXERS

## » SPECIFICATIONS

### Filter Wavelengths

See Ordering Information

### Insertion Loss

3.1 dB (max) per channel (mux or demux)  
3.0 dB (max) (expansion port; mux or demux)

### Adjacent Channel Isolation

30 dB (min)

### Non-Adjacent Channel Isolation

40 dB (min)

### Passband Ripple

0.3 dB

### Channel Passband

+/- 6.5 nm

### Channel Spacing

20 nm

### Return Loss

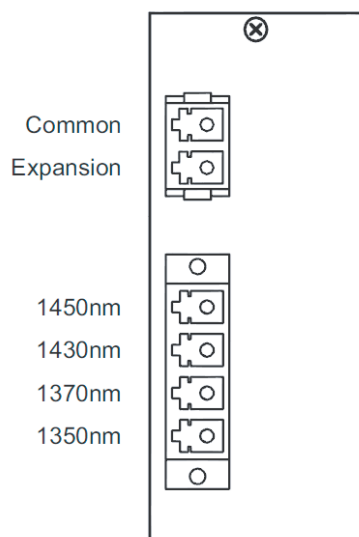
50 dB (min)

### Frame Slot Usage

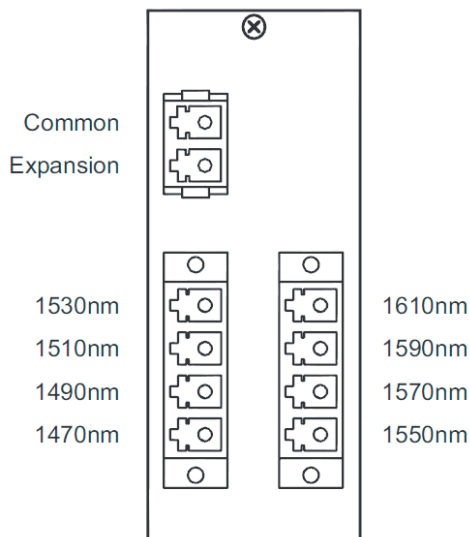
2 per unit

### Connector Type

Type LC



**9490CWDM-4MX-LC / 9490CWDM-4DX-LC**  
**REAR MODULE CONNECTIONS (TYPICAL)**



**9490CWDM-8MX-LC / 9490CWDM-8DX-LC**  
**REAR MODULE CONNECTIONS (TYPICAL)**

Note: Depending on model, wavelength designations for the mux/demux ports may vary from those shown here. Refer to label on rear module for wavelength designations.

## » ORDERING INFORMATION

**9490CWDM-4MX-LC** 4-Channel Optical Mux with expansion port; 1350nm - 1370nm - 1430nm - 1450nm. Includes type LC connector Rear I/O Module

**9490CWDM-8MX-LC** 8-Channel Optical Mux with expansion port; 1470nm - 1490nm - 1510nm - 1530nm - 1550nm - 1570nm - 1590nm - 1610nm. Includes type LC connector Rear I/O Module

**9490CWDM-8M-LC** 8-Channel Optical Mux; 1270nm - 1290nm - 1310nm - 1330nm - 1350nm - 1370nm - 1430nm - 1450nm. Includes type LC connector Rear I/O Module

**9490CWDM-4DX-LC** 4-Channel Optical De-Mux with expansion port; 1350nm - 1370nm - 1430nm - 1450nm. Includes type LC connector Rear I/O Module

**9490CWDM-8DX-LC** 8-Channel Optical De-Mux with expansion port; 1470nm - 1490nm - 1510nm - 1530nm - 1550nm - 1570nm - 1590nm - 1610nm. Includes type LC connector Rear I/O Module

**9490CWDM-8D-LC** 8-Channel Optical De-Mux; 1270nm - 1290nm - 1310nm - 1330nm - 1350nm - 1370nm - 1430nm - 1450nm. Includes type LC connector Rear I/O Module