

You can update your BlueBox™ unit by downloading the new Update software by going to:  
**Support > Firmware Downloads** at [www.cobaltdigital.com](http://www.cobaltdigital.com)

Software Version (Date)	BBG-HtoS - Firmware Update Description
<b>Rev 1379</b> <b>(02/01/2024 - Present)</b>	This revision improves the input signal lock for certain 1080p sources
BlueBox™ revision 830 (1/11/2021 - 02/01/2024) Applicable for BBG: A-to-S; S-to-A & S-to-H; H-to-S	Addresses a manufacturability maintenance requirement. <b>Note:</b> Current devices in field use using previous release revision 812 do not require this upgrade.
BlueBox™ revision 812 (2/25/2015 - Present) Applicable for BBG: A-to-S; S-to-A S-to-H; H-to-S	<b>Corrections:</b> <ul style="list-style-type: none"> <li>• Corrects uploader to prevent condition where subsequent firmware upgrade uploads could result in device lock-up. This revision contains all functional improvements noted below as well as fixing the upgrade lock-up issue.</li> </ul> <b>Note:</b> For BBG A-toS units in serial number range 377836R or lower, please contact Cobalt Support for upgrade uploads. If corrections and improvements noted here are not of concern, the current firmware version can be used. If any of these conditions may be of concern, the unit will need to be returned to Cobalt for reprogramming.
BlueBox™ revision 761 (11/11/2014 - 2/25/2015) Applicable for BBG A-to-S	<b>Corrections:</b> <ul style="list-style-type: none"> <li>• Corrects a field and line shift for HD inputs.</li> <li>• Corrects condition where front panel Status LED may remain lit and unblinking even if input is lost. This release must only be field-uploaded to units with SN 377837R or higher.</li> </ul>
BlueBox™ revision 728 (9/5/2014 - 2/25/2015) Applicable for BBG A-to-S	<b>Improvements:</b> <ul style="list-style-type: none"> <li>• Improves signal lock time, especially in cases where Y-channel has experienced a signal make/break/make.</li> </ul> <b>Known Issues:</b> <ul style="list-style-type: none"> <li>• A field and line shift on the output may be present when using HD inputs.</li> <li>• When the unit has received a valid input, and the input is subsequently lost, the front panel Status LED may remain lit and not blinking, falsely indicating input lock.</li> </ul> For units in serial number range 377836R or lower, please contact Cobalt Support. If these issues are not of concern, the current firmware version can be used. If either of these conditions may be of concern, the unit will need to be returned to Cobalt for reprogramming.
BlueBox™ revision 661 (12/12/2013 - 2/25/2015) Applicable for BBG S-to-H	<b>(BBG-S-to-H) Improvements:</b> <ul style="list-style-type: none"> <li>• Adds functions for DIP switches previously reserved that allow the following added functions:               <ul style="list-style-type: none"> <li>- Audio de-embed from selected SDI audio group 1 and 2 pairs.</li> <li>- A Ch3 / Ch4 “swap” control that allows a L-R-C-LFE-Ls-Rs or L-R-LFE-C-Ls-Rs channel line-up as desired.</li> <li>- Switches that allow manual assert of HDMI or DVI output modes, as well as YPbPr or RGB color space.</li> </ul> </li> </ul> These switches assert the desired output mode without the need of a downstream device providing a handshake to identify itself as an HDMI or DVI device and help ensure expected operation when connected to devices such as consumer DVI monitors. <b>Note. It is recommended to download the latest Instruction Sheet (manual) for this product by going to the product web page at <a href="http://www.cobaltdigital.com">www.cobaltdigital.com</a> and selecting Downloads &gt; Product Manual.</b>
BlueBox™ revision 614 (5/20/2013 - 12/12/2013)	<ul style="list-style-type: none"> <li>• Baseline BlueBox firmware version.</li> </ul>

## Uploading Instructions

Upload upgrade firmware to your BlueBox™ unit as described below.

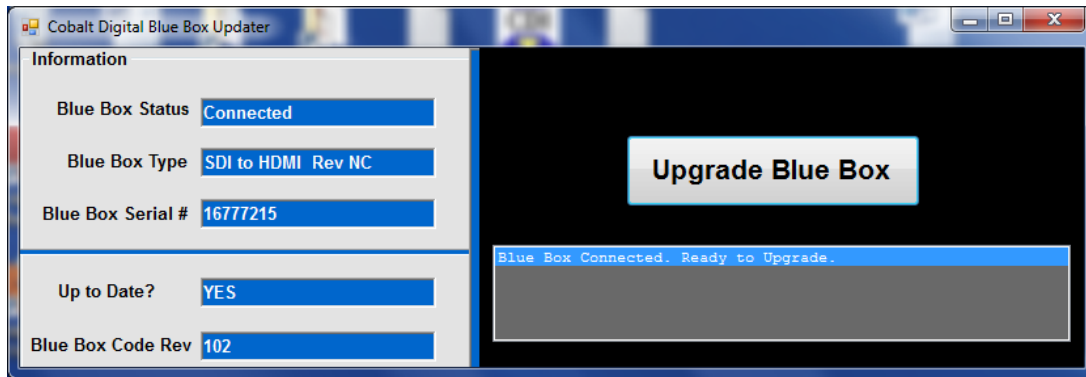
**Note:** The upgrade firmware uses an up-grader .exe file that uploads the target firmware onto the BlueBox device. This application will only run on Windows machines using XP or newer operating systems.

**Note:** The upgrade file is an .exe file that requires .Net 4.0 framework or greater on the host computer. Make certain your computer is not set to block this executable as a web download.

**Note:** In some cases, Upgrade up-loader won't work if other active USB devices are connected to computer while the BBG Updater is connected and running.

**Temporarily disconnect other USB - connected devices when performing upgrade.**

1. From the **Support > Firmware Downloads** link at [www.cobaltdigital.com](http://www.cobaltdigital.com), download the upgrade firmware to any location accessible on your computer.
2. Connect the BlueBox™ unit being upgraded to host computer USB port. Make certain no other BlueBox™ units are connected to computer at this time.
3. Browse to the **Updater.exe** file downloaded on your computer and double-click to run it. The Updater now opens and shows BlueBox info and current firmware revision (as shown in the example below).



4. Click **Upgrade Blue Box** and observe upload progress and prompts.
5. When **Up to date?** "YES" appears and the target revision number is displayed, your BlueBox™ unit is now upgraded to the target revision. Close the Updater and disconnect the USB cable.

**Note:** Although not required to safely disconnect, if a USB connection icon is shown in your computer's tray, use the icon to break the USB connection.